

## PE Anti-Human CD38 Monoclonal Antibody



天津三箭生物技术股份有限公司  
Tianjin Sungene Biotech Co., Ltd.  
精准 高效 稳定 Precision Efficient Stable

Catalog Number	Vial Size
H20381-09G	25 tests
H20381-09H	100 tests

**Market** | 400-621-0003  
marketing@sungenebiotech.com

**Support** | 022-66211636-8024  
techsupport@sungenebiotech.com

**Web** | www.sungenebiotech.com

**Important Note:** Centrifuge before opening to ensure complete recovery of vial contents.  
This product is guaranteed up to one year from purchase.

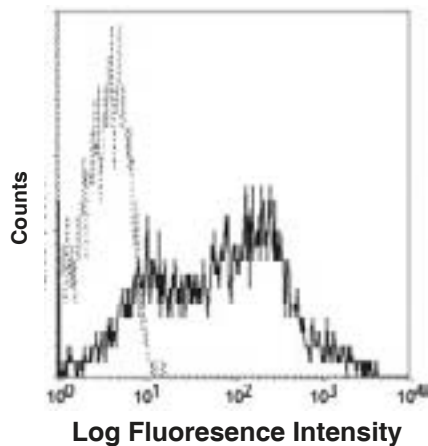
### Purified Antibody Characterization

Clone	Isotype	Reactivity
HIT2	Mouse IgG1	Human

### Description

CD38 is a 45 kD type II transmembrane glycoprotein also known as T10. It is an ADP-ribosyl hydrolase expressed at variable levels on hematopoietic cells and in some non-hematopoietic tissues (such as brain, muscles, and kidney). In humans, it is expressed at high levels on plasma cells and activated T and B cells. By functioning as both a cyclase and a hydrolase, CD38 mediates lymphocyte activation, adhesion, and the metabolism of cADPR and NAADP. CD31 is the ligand of CD38.

### Illustration of Immunofluorescent Staining



Human peripheral blood lymphocytes  
stained with PE anti-human CD38

### Product Information

**Conjugation:** PE

**Formulation:** PBS pH 7.2, 0.09% NaN<sub>3</sub>,  
0.2% BSA

**Storage:** Keep as concentrated solution. Store at 4°C and protected from prolonged exposure to light. **Do not freeze.**

**Application:** Recommended Application: FC

**Usage:** Each lot of this antibody is quality control tested by immunofluorescent staining with flow cytometric analysis (The amount of the reagent is suggested to be used from 20 µL to 5 µL per 100 µL of peripheral blood. Please check your vial). Since applications vary, the appropriate dilutions must be determined for individual use.

### References

- [1] Ferrero E, et al. 1999. J. Leukoc. Biol. 65:151.
- [2] Lund F, et al. 1995. Immunol. Today 16:469.

**For Research Use Only.**